

LINDY®

CONNECTION PERFECTION

USB VoIP Phone – 2 Piece

User Manual

English



LINDY No. 42779

www.lindy.com



Introduction

Thank you for purchasing the LINDY USB VoIP Phone. This phone has been designed primarily for use with Skype, but can also be used with other VoIP applications. You can control the Skype software by simply pressing the keys on the phone to select phone listing and dialling function. With the in-built echo eliminating technology, voice clarity is vastly improved.

Features

- USB 1.1 & USB 2.0 specification compliant
- Compatible with VoIP (Voice over Internet Protocol) solutions, such as Skype, MSN Messenger and Yahoo Messenger
- Built in hot key functions to make operating the Skype software as easy as dialling a normal telephone.
- Skype hot key, up, down, 0 ~ 9, send & hook on the base unit for quick access
- Built in speaker and microphone
- Echo-eliminating for better sound quality
- Buzzer function for incoming call alerts
- Desk and Wall mount

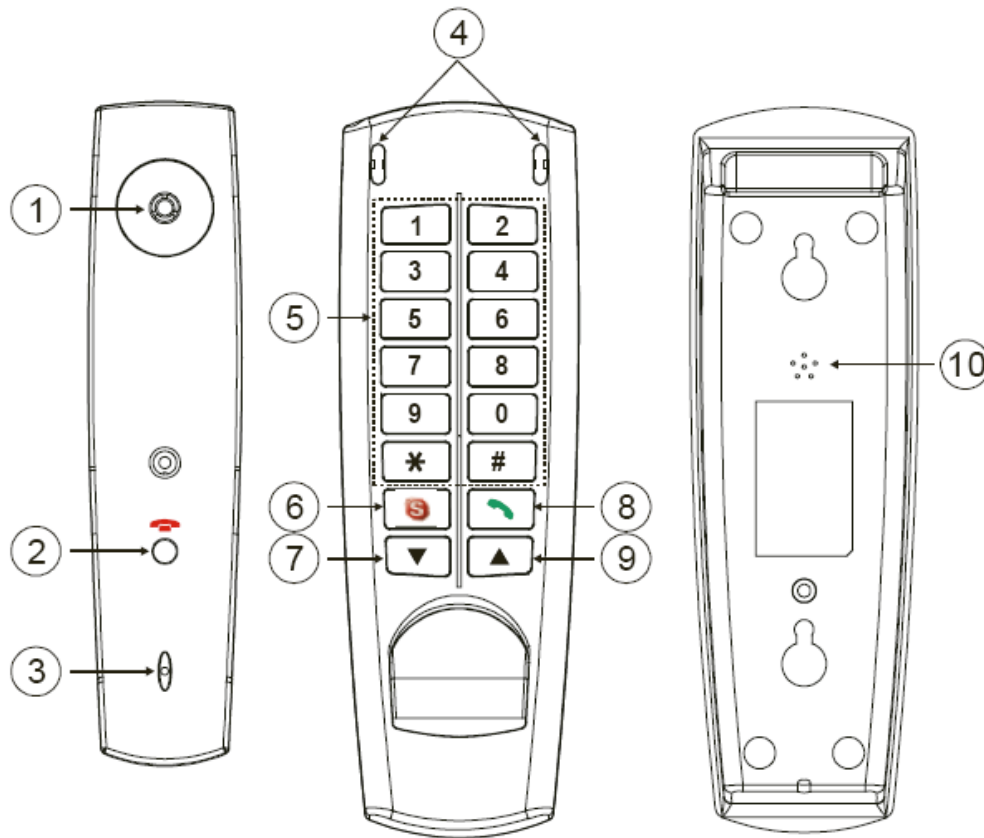
System Requirements

- Processor: PC 1GHZ or over
- Storage: 128MB RAM 15MB Hard Disk
- Internet service: ISDN, ADSL or LAN
- Operating System: Microsoft Windows 2000/XP/Vista, Mac OS compliant
- Skype Software Version: 2.0 or over

Package Contents

- USB phone
 - Installation CD (API Software and manual)
 - This manual
-

Function Keys



1	Speaker	speaker
2	Hang Up Button	on-hook & make a new call.
3	Microphone	microphone
4	LED	power and ringing indicator
5	Number Button	skype out dialer button
6	Skype Table Button	select contact, miss list, call list of Skype table.
7	Down Button	select list of contact list, Missed call list, Called list.
8	Dial Key	make a call.
9	Up Button	select list of contact list, Missed call list, Called list.
10	Buzzer	incoming call ringer

Installation

1. Hardware Installation

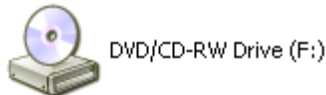
Please connect the USB VoIP Phone to your computer's USB port. Your computer will find a USB Audio Device. The driver will be installed automatically.

2. Installing Skype Software

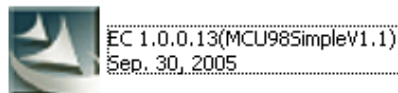
If Skype is not yet installed on your computer, please download the latest version of the software from www.skype.com and install on your computer. If you experience any problems while installing this software then please refer to the Skype website.

3. Installing the API Software

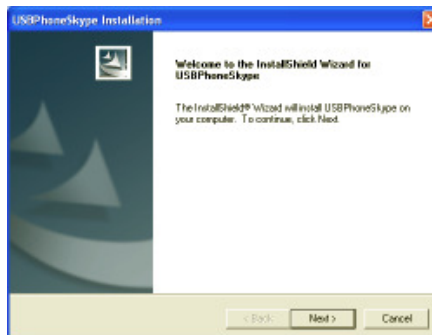
- 3.1 Insert the Utility CD into your CD-ROM drive. Double Click My Computer and then choose the CD-ROM drive.



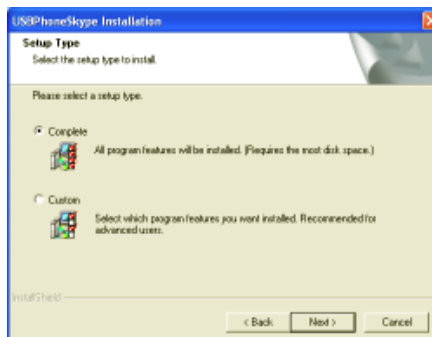
- 3.2 Run the setup icon to start the installation.



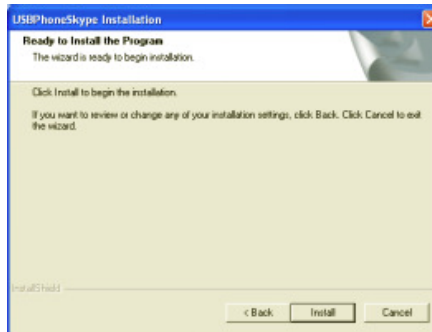
- 3.3 Please click Next.



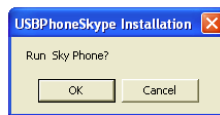
- 3.4 Please click Next.



3.5 Click Install to begin the installation.



3.6 After installing, click OK to start the API program.







3.7 When this dialogue appears: “Another program wants to use Skype”. Select “Allow this program to use Skype” and click the OK button.



Note:

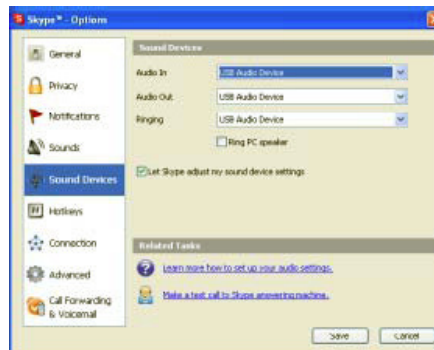
If you accidentally select the “Do not allow this program to use Skype” option, open the Skype window and take these steps: Click “Tools ► Options ► Privacy ► Manage other programs access to Skype”, Select “USBPHONESKYPE.EXE” and click “Change”. Select “Allow this program to use Skype” and click the OK button.

3.8 When you have finished installing the API software, a small icon will appear in the system tray. The icon displays different colours to show the status of USB phone as follows:

	(Black)	USB Phone disconnect & skype disconnect
	(Green)	USB Phone In-used / Skype On-line
	(Red)	USB Phone disconnect
	(Blue)	Skype disconnect

4. Setting Audio and Sound Device

Open the Skype window, click “Tools ► Options ► Sound Devices”. In the items “Audio In” and “Audio Out”, please select USB Audio Device, then click Save.



5. Using the Handset

5.1 Calling a Skype User

Pick up the handset, the Skype window will pop-up automatically. Press the Skype key on the base unit to select contact, call list, Live or history.

Press the Up and Down key to scroll the list of contacts; when you have found the desired contact press the dial key to make a call.

To cancel the call replace the handset in the base unit or press the hang up button on the handset.

5.2 Calling a Phone Number (Skype Out)

Before using this function, please make sure you have paid for the service.

For further information about Skype Out, please go to <http://www.skype.com>.

Pick-up the handset and dial the phone number by pressing the keys on the base unit.

Press the send key to call the number

Note:

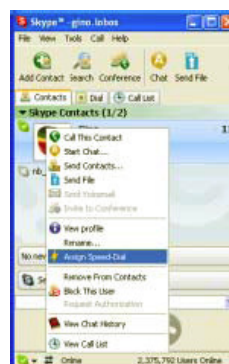
You must include the “country code” + “area code” (leaving out the leading zero) + “number” e.g. “0044” “1642” “754000”

5.3 Answer a Call

When the USB phone is ringing with an incoming call, pick up the handset to answer the call and place the handset in base unit to end a call.

5.4 Assign Speed-Dial

Open the Skype window, select contacts, right-click the user name on the contact list and select “Set Speed-Dial”.



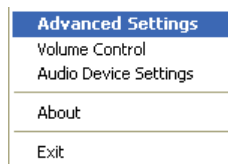
Set the speed dial number, example “11” and press OK.



To use speed dial on the handset, pick up the handset and dial “11”. Then press the “dial” key to make a call to this contact.

6. API Program Instruction

Right-click the USB Phone icon in the system tray, there are five items on the list.



6.1 Advanced Settings

Option 1: Auto Switch Skype Audio Device

Skype will switch suitable audio device automatically.

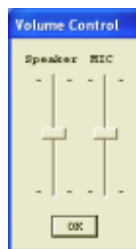
Option 2: Auto Run Skype when Plug in

If Skype doesn't run, the API will run Skype automatically when plugging the handset into the USB port of the PC.



6.2 Volume Control

You can control the volume of speaker and microphone in this window.



6.3 Audio Device Settings

To change the Windows default audio device.



6.4 About

The window shows information about the USB Phone.



6.5 Exit

To quit the API program.

7 Other IM Software Setting

7.1 MSN Messenger

Open MSN Messenger, Click “Tools” and select “Audio and Video Setup...”. Then follow the wizard to select the USB phone and test.

7.2 Yahoo Messenger

Open Yahoo Messenger, Click “Yahoo! Audio Setup Wizard” item. Then test the USB phone Speaker and Microphone.

Troubleshooting

Q1 Skype is launched, but it has no response when I pick up the handset and press a key using my USB phone

A1. Make sure your Skype is allowed to be accessed by the provided API. Please refer to point 3 installing the API software.

Q2. While using messenger software or Skype, the voice is played from the PC sound card instead of the USB phone.

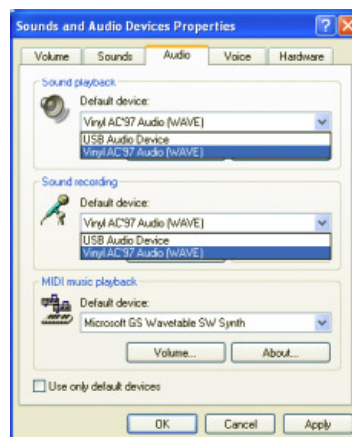
A2. Make sure your software is configured to USB phone as audio device. Refer to point 4 Setting Audio and Sound device.

In MSN Messenger please refer to point 7.1 MSN Messenger setting.

In Skype please refer to point 3 ‘Installing the API software.’

Q3. There is no audio from my speakers when I play music?

A3. Please go to your Control Panel/Sound and Audio Devices, set Sound playback and Sound Recording’s preferred device to your sound card, as shown below:



Certifications

FCC Certifications

This equipment has been tested and found to comply with the limits for a Class A digital device, pursuant to part 15 of the FCC Rules. These limits are designed to provide reasonable protection against harmful interference when the equipment is operated in a commercial environment. This equipment generates, uses, and can radiate radio frequency energy and, if not installed and used in accordance with the instruction manual, may cause harmful interference to radio communications. Operation of this equipment in a residential area is likely to cause harmful interference in which case the user will be required to correct the interference at their own expense.

This device complies with Part 15 of the FCC Rules. Operation is subject to the following two conditions: (1) this device may not cause harmful interference, and (2) this device must accept any interference received; including interference that may cause undesired operation.

CE Certification

This equipment complies with the requirements relating to electromagnetic compatibility, EN 55024 and EN55022 class A for ITE, EN61000-3-2/-3 the essential protection requirement of Council Directive 89/336/EEC on the approximation of the laws of the Member States relating to electromagnetic compatibility.

Recycling Information

WEEE (Waste of Electrical and Electronic Equipment),
Recycling of Electronic Products

United Kingdom

In 2006 the European Union introduced regulations (WEEE) for the collection and recycling of all waste electrical and electronic equipment. It is no longer allowable to simply throw away electrical and electronic equipment. Instead, these products must enter the recycling process.

Each individual EU member state has implemented the WEEE regulations into national law in slightly different ways. Please follow your national law when you want to dispose of any electrical or electronic products. More details can be obtained from your national WEEE recycling agency.

Germany / Deutschland

Die Europäische Union hat mit der WEEE Richtlinie umfassende Regelungen für die Verschrottung und das Recycling von Elektro- und Elektronikprodukten geschaffen. Diese wurden von der Bundesregierung im Elektro- und Elektronikgerätegesetz – ElektroG in deutsches Recht umgesetzt. Dieses Gesetz verbietet vom 24. März 2006 an das Entsorgen von entsprechenden, auch alten, Elektro- und Elektronikgeräten über die Hausmülltonne! Diese Geräte müssen den lokalen Sammelsystemen bzw. örtlichen Sammelstellen zugeführt werden! Dort werden sie kostenlos entgegen genommen. Die Kosten für den weiteren Recyclingprozess übernimmt die Gesamtheit der Gerätehersteller.

France

En 2006, l'union Européenne a introduit la nouvelle réglementation (DEEE) pour le recyclage de tout équipement électrique et électronique.

Chaque Etat membre de l' Union Européenne a mis en application la nouvelle réglementation DEEE de manières légèrement différentes. Veuillez suivre le décret d'application correspondant à l'élimination des déchets électriques ou électroniques de votre pays.

Italy

Nel 2006 l'unione europea ha introdotto regolamentazioni (WEEE) per la raccolta e il riciclo di apparecchi elettrici ed elettronici. Non è più consentito semplicemente gettare queste apparecchiature, devono essere riciclate. Ogni stato membro dell' EU ha tramutato le direttive WEEE in leggi statali in varie misure. Fare riferimento alle leggi del proprio Stato quando si dispone di un apparecchio elettrico o elettronico.

Per ulteriori dettagli fare riferimento alla direttiva WEEE sul riciclaggio del proprio Stato.

LINDY No. 42779

1st Edition March 2009



www.lindy.com