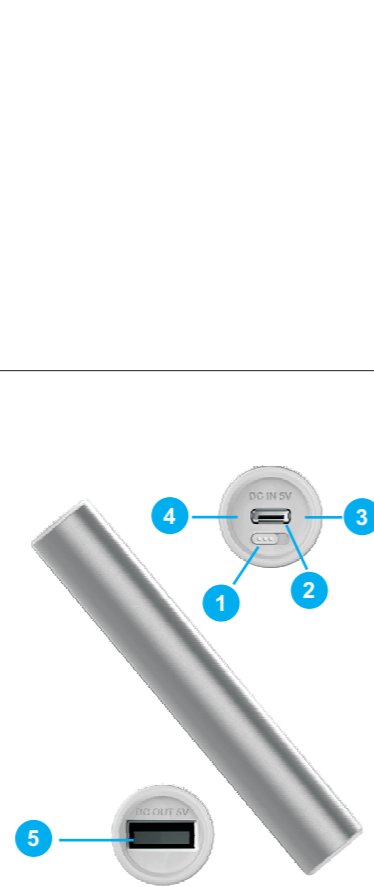


MOBILE POWER

User Guide



Introduction

With the Mobile Power, you can charge your digital product when you have no access to an external power source.

The Mobile Power contains the following parts shown on the this page: output control switch (1), micro USB input connector (2), right indicator light (3), left indicator light(4), A type USB output connector(5). This product may contain small parts. Keep them out of the reach of small children.



The Mobile Power is meant for partial and occasional charging.

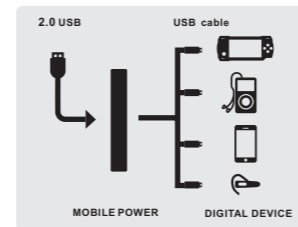
Read this user guide carefully before using the Mobile Power. Also, read the user guide for the device that you charge with the Mobile Power.

Easy power wherever you go whenever you need.

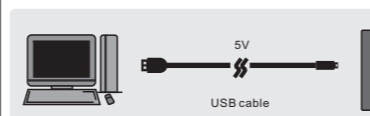
Specifications

- Capacity : 2200mAh, 3.7V/8.1Wh
- Dimension: 21.3mm(D) x 129mm(L)
- Weight : 73g
- Input: DC5V / 900mA (max)
- Output: DC 5V / 900mA(max)

Applicability



Charge the Mobile Power



IMPORTANT: Before first use please fully charge the Mobile Power.

1. Connect the micro USB end of the USB cable to the micro USB input connector (2) of the Mobile Power.
2. Plug the USB connector of the USB cable into USB port of your laptop/PC. Whilst the Mobile Power is charging. The left indicator light is red. The right indicator shows the battery status.

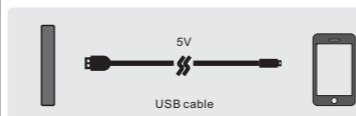
Indicator behavior should be as follow

Battery status	Left indicator	Right indicator
<30%	RED	RED
30%-70%	RED	GREEN
70%-100%	RED	BLUE
Full	OFF	BLUE

3. When the Mobile Power is fully charged, the left indicator is off and the right indicator light is blue. Disconnect the Micro USB cable from the Mobile power and laptop/PC. The Mobile Power can also be charged through an AC adaptor with a USB port.

If your AC adaptor supports big current output, you can open switch (1) to open Mobile Power big current charging function. Full charge time is about 3 to 5 hours based on input current. While charging the Mobile Power, you can use Mobile Power to charge other device.

Charge other device



You can use the Mobile Power to charge other device. The fully charged Mobile Power has enough power to fully charge at least a 1300 mAh battery once.

IMPORTANT: Charging capacity is an estimate only and depends on battery age and conditions and on temperatures to which battery is exposed.

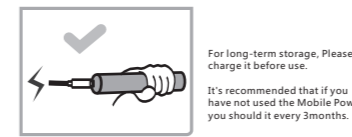
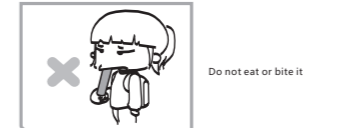
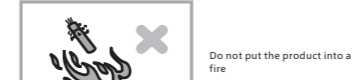
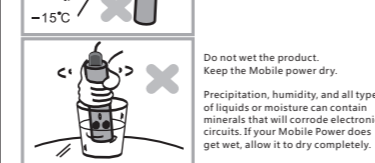
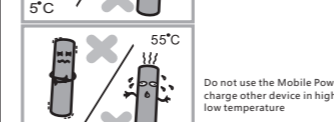
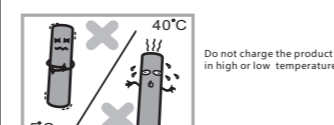
1. Connect USB connector of your USB charge cable to the output connector (5) of the Mobile Power.
2. Connect the charger plug of your USB charge cable to the other device.
3. Open the output control switch(1) of the Mobile Power. The right indicator light in on and shows battery status of the Mobile Power.

Indicator behavior should be as follow

Battery status	Left indicator	Right indicator
70%-100%	OFF	BLUE
30%-70%	OFF	GREEN
<30%	OFF	RED
Too low	OFF	OFF

4. Check the charge level from the connected device. When the battery in the other device becomes fully charged, disconnect the Mobile Power from the other device.

Care and maintenance



•Do not store the device in hot areas. High temperatures can shorten the life of electronic devices, damage batteries, and warp or melt certain plastics.

•Do not store the device in cold areas. When the device returns to its normal temperature, moisture can form inside the device and damage electronic circuit boards.

•Do not use harsh chemicals, cleaning solvents, or strong detergents to clean and prevent proper operation.

•Do not paint the Mobile Power. Paint can clog the moving parts and prevent proper operation.

•Clean the Mobile Power only with a soft dry cloth.

•If the product is not working properly, take it to the nearest authorized facility for service.



This device complies with Part 15 of the FCC Rules. Operation is subject to the following two conditions. (1) this device may not cause harmful interference, and(2) this device must accept any interference received, including interference that may cause undesired operation.